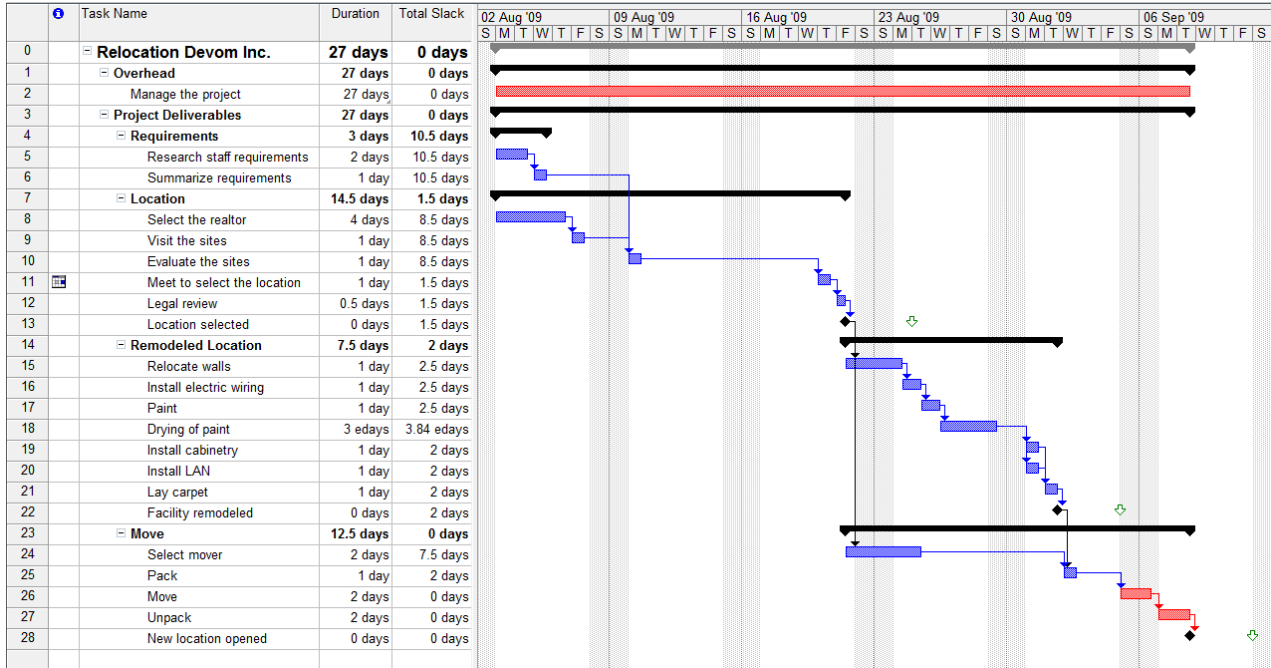
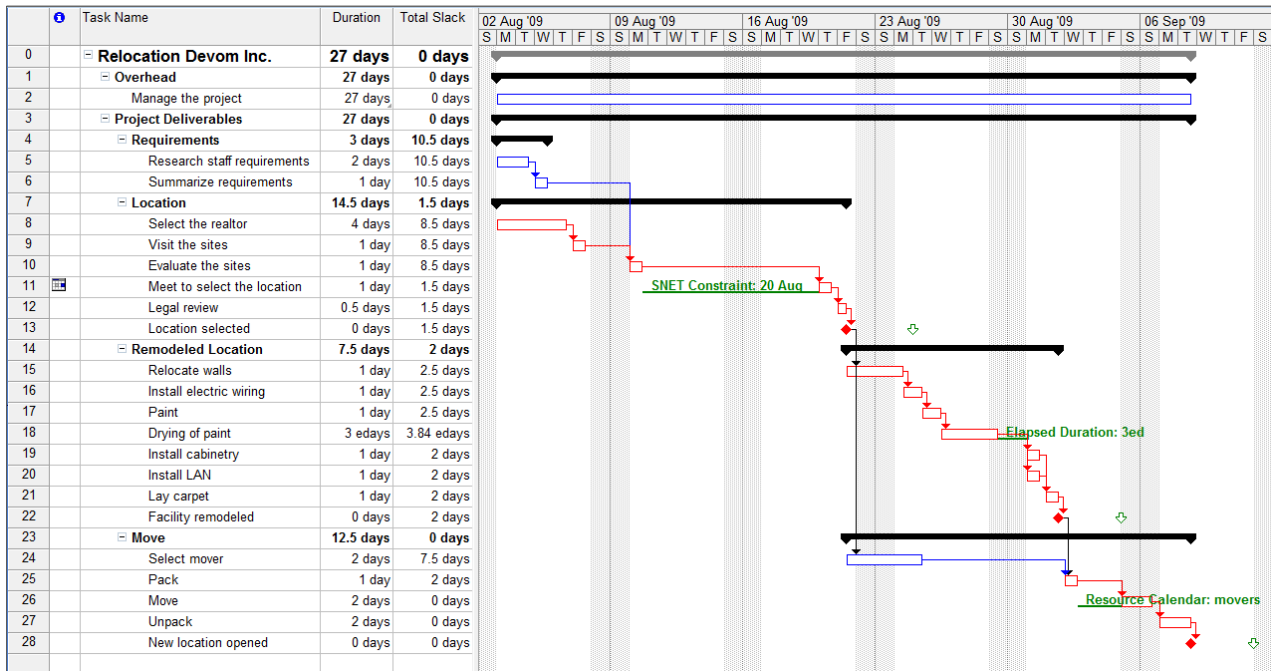


Would You Like to See a Complete Critical Path?

Many people know how to highlight critical tasks in Microsoft Project. However, the critical path does not always come out as you would expect. Often the critical path appears incomplete (only tasks 26-28 critical) or it appears on overhead tasks (task 2) as is shown in this screen shot:



Notice in the *Total Slack* column how the numbers go up and down in the schedule, which makes it impossible for Microsoft Project's algorithm to present a complete Critical Path. Our add-in, **Complete Critical Paths**, will crawl through the entire network and present the most Critical Path in your schedule in the following way:



Notice that gaps in your most Critical Path are depicted by green lines and explained by green text.

Our add-in, **Complete Critical Paths**, will benefit you, if you experience any of the following situations:

- *Incomprehensible Critical Paths*: Why is this task on the Critical Path? Why is this critical task bar so long? Why is this gap in my Critical Path?
- *Incomplete Critical Paths*: Why does the Critical Path in my schedule only explain part of the project duration? Why do I not see a complete Critical Path explaining the entire project duration?
- *Resource Critical Paths*: Do you have unlimited resources - anybody? These days, nobody has access to unlimited resources any longer. If you work with experts, you are in a resource-constrained project. The problem is the Critical Path Method assumes that you have access to unlimited resources, unlimited experts. When you level the workloads and slip some tasks, the Critical Path will be broken and only explain part of the project duration. Our add-in will display the Resource-Critical Path in your schedule.

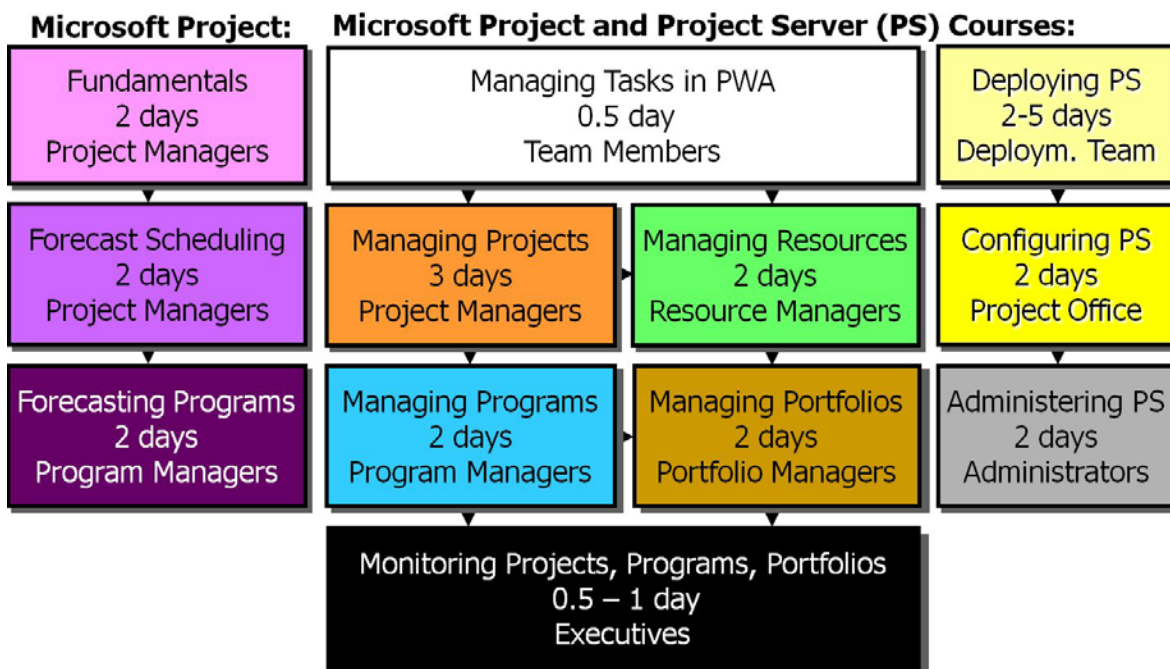
Please, call 613-692-7778 for a 30 minute, online demo of our **Complete Critical Paths** add-in by Eric Uyttewaal, PMP.

Technical specifications:

- Complete Critical Paths, version 2.0, works with Microsoft Project 2007 or later. Please, let us know if you have the 2003 version, because we will create a 2003 version if there is enough demand.
- This add-in installs itself as a toolbar titled Complete Critical Paths, within Microsoft Project.

ProjectPro Corp specializes in Microsoft Project and Project Server training and consulting.

ProjectPro carries a complete assortment of courses for all roles involved in a Project Server environment:



Please visit: www.ProjectProCorp.com for detailed course outlines, or call: 613-692-7778 to speak to Eric Uyttewaal (author of *Forecast Scheduling with Microsoft Project 2010* and president of ProjectPro Corp.) to discuss the learning needs of your organization.